



EVAPORATION AT THE HIGHEST LEVEL

Evaporation Engineered by Experts

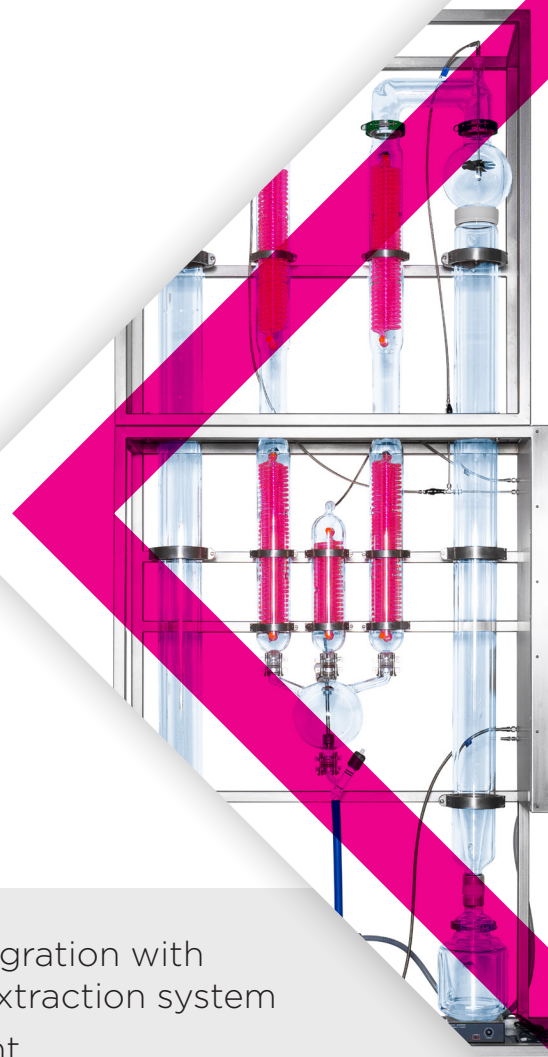
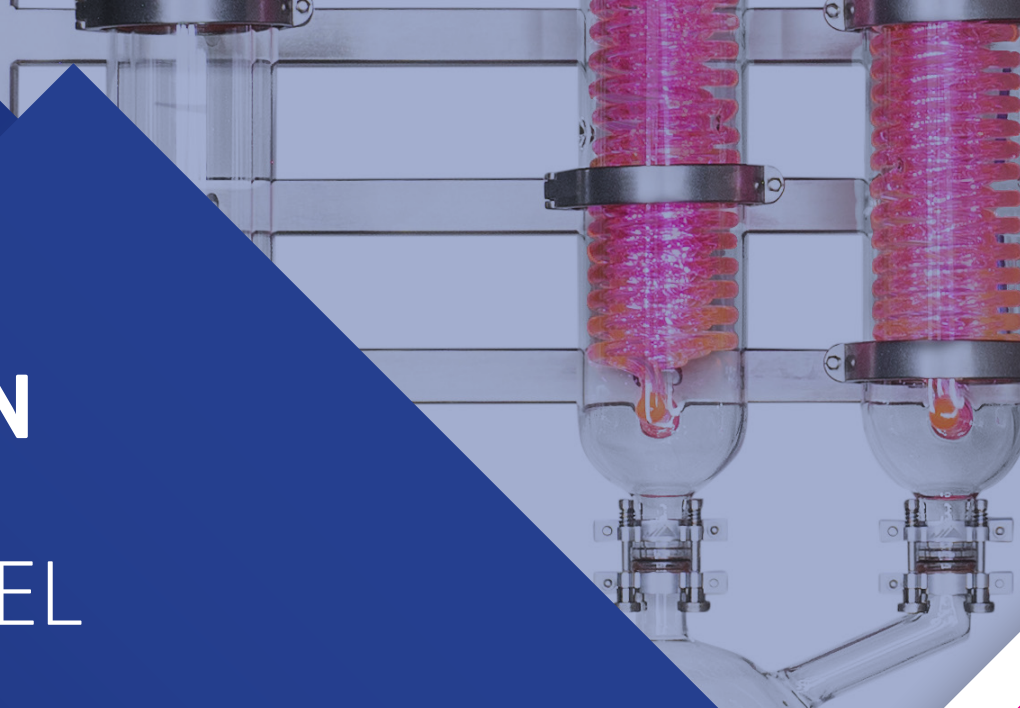
Experience our patented falling film technology.

Imagine a better journey from plant extract to product. Our evaporation equipment eliminates the everyday hassles of separation and purification while recapturing up to 99%* of solvent, elevating your end product with professional-level quality and efficiency.

SprayVap is our patented evaporation system that uses a closed-loop liquid to liquid separation design to generate high-quality oil in a high throughput setting, all while recapturing more solvent than any other model on the market.

- Patented falling film technology
- Up to 99% solvent recovery*
- FDA Compliant (GRAS)
- Captures more plant essentials without damaging heat
- Seamless integration with TripleXtract extraction system
- Small footprint

*Results may vary depending on water content, operating parameters, chemical compounds, etc.





Decarb station

Available in 5L and 12L, our DS line of decarboxylation equipment makes it easy to rapidly transition cannabinoids from the acid phase while eliminating volatile compounds along the way. Our equipment is designed to separate the decarboxylation process entirely, which keeps distillation and other equipment clean and sanitary.

- 5L or 12L capacity
- Keeps COOH from building up on other processing equipment
- Drives out volatile substances
- Converts acids to neutrals

Model	Capacity (L)	SV footprint	Heater/Chiller footprint (approx.)	Processing Speed (L/hr)	ETOH Recovery Up To*	Residual ETOH**	Total Power
SV20	N/A	20" X 44"	54" x 34"	20	99.5%	0.5%	60A 240/1/60
SV25UL	N/A	20" X 44"	54" x 34"	20	99.5%	0.5%	60A 240/1/60
SV35UL	N/A	20" X 44"	44" x 48"	35	99.5%	0.5%	100A 240/1/60
SV50UL	N/A	20" X 62"	51" x 48"	50	99.5%	0.5%	80A 230/3/60
SV70UL	N/A	20" X 62"	51" x 48"	70	99.5%	0.5%	100A 230/3/60
SV100UL	N/A	20" X 62"	68" x 51"	100	99.5%	0.5%	165A 230/3/60
SV200UL	N/A	40" X 62"	93" x 58"	200	99.5%	0.5%	135A 460/3/60
SV1000UL	N/A	140" X 62"	228" x 58"	1000	99.5%	0.5%	675A 460/3/60
DS5	3L	24" X 24"	N/A	N/A	N/A	N/A	6A 120/1/60
DS12	8L	24" X 24"	N/A	N/A	N/A	N/A	11A 120/1/60

*Results may vary depending on water content, operating parameters, chemical compounds, etc.
 **Includes heaters and chillers

Pure Processing Power™

SCHEDULE A DEMO

coloradoextraction.com
 800.513.5560 | sales@coloradoextraction.com

